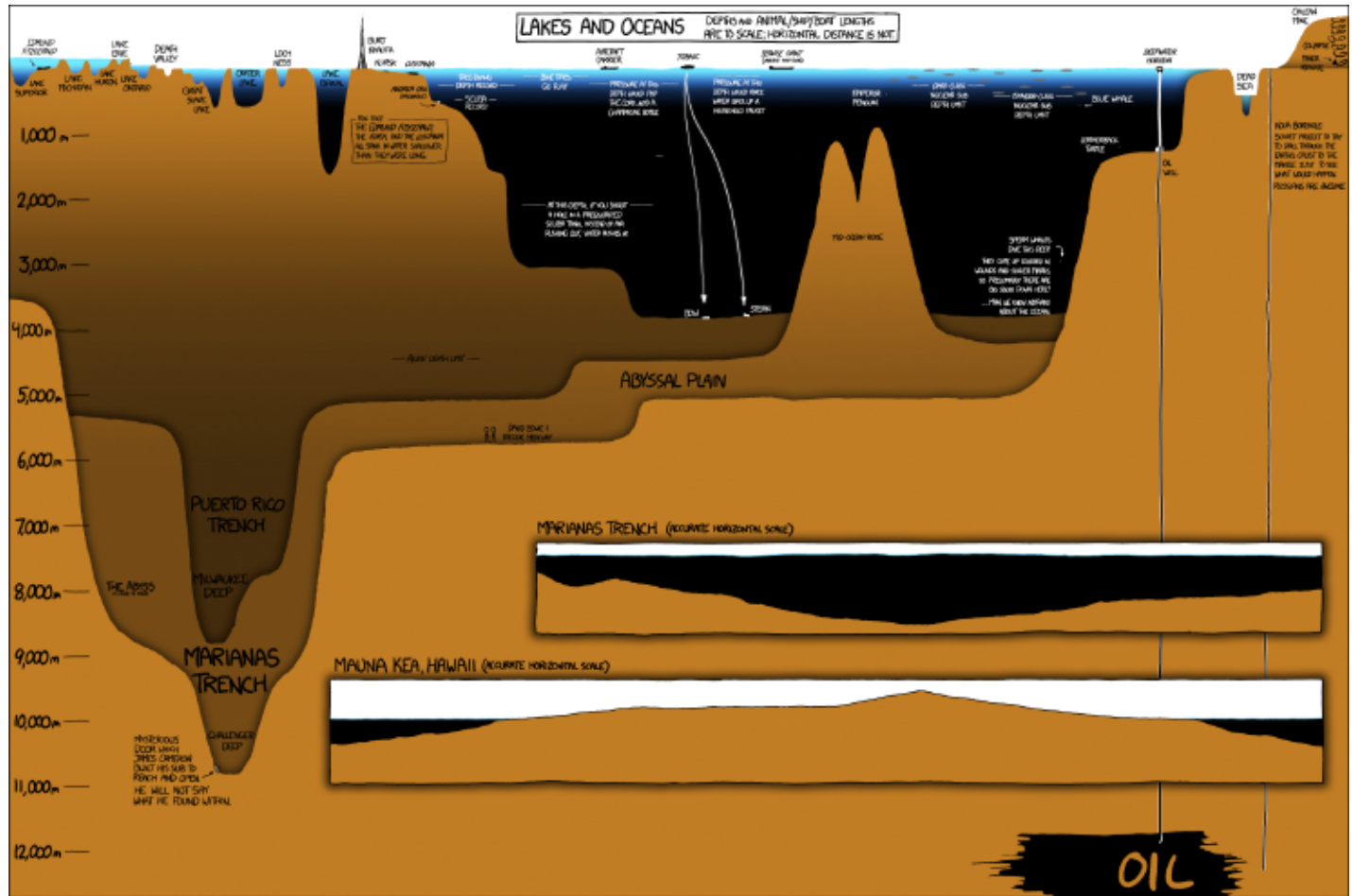
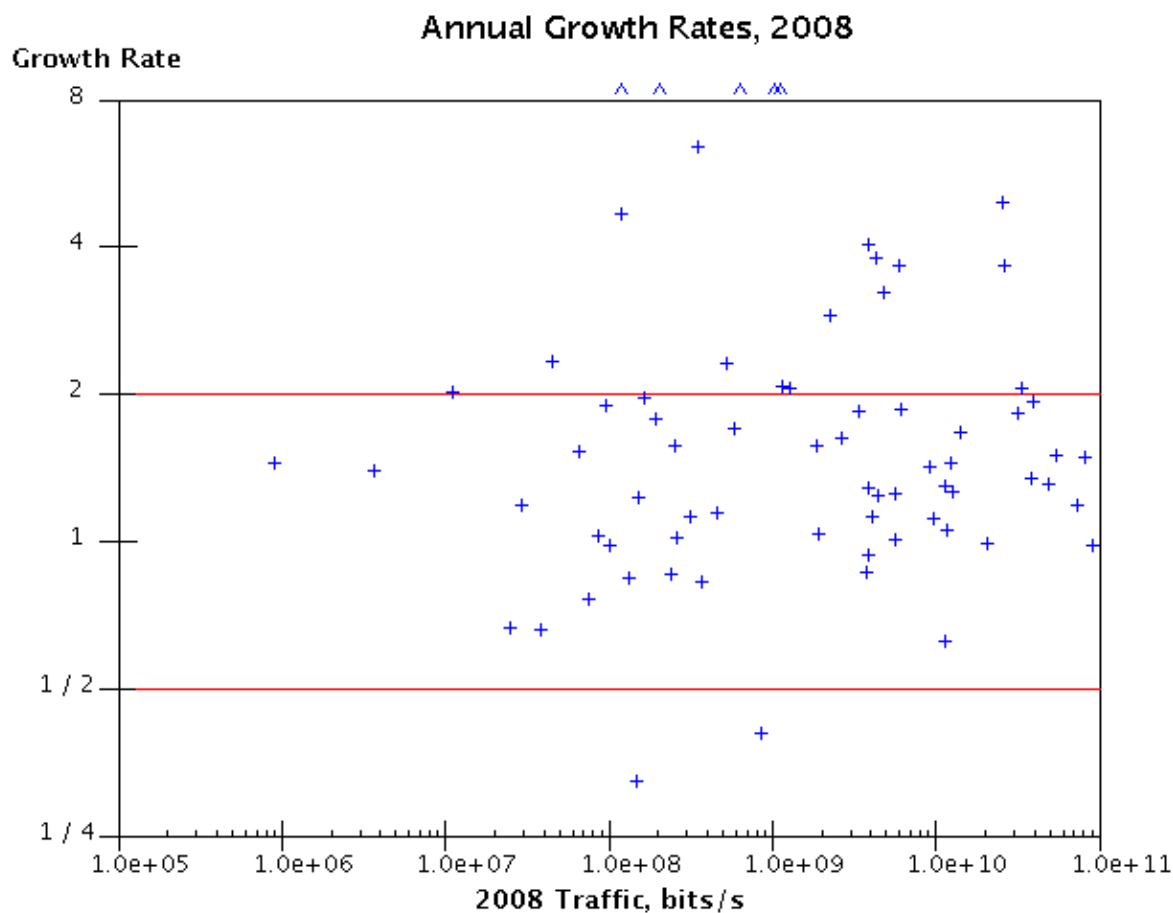


Good Visualization



This Image gives an overview of relations between depths (and some heights as reference) on Earth. Sizes and relations are roughly accurate, and are also represented as absolute values by the Y-axis. Its main strength is the ability to get an immediate feeling for relations between several rather known points and also some interesting details (like max diving depth of the Alvin Exploration Submarine). Although not useful for getting precise numbers, due to artistic freedom in presentation, it still remains very useful and fulfills its purpose.

Bad Visualization



This Plot is part of an online paper on the growth rates of annual consumed internet bandwidth in 2008. It is a direct plot of gathered data linked in the paper. It's a great example of a rather bad visualization, as, on the first view, even with the context provided by the paper, it is really hard to make any sense of it. First, the choice of axis is rather unusual (growth rate vs bit/s), and without looking at the data-table directly, one can't really figure out the data that is being displayed.